



Charleston County

Transportation Development

News Release

October 12, 2017

Release Number: 4183

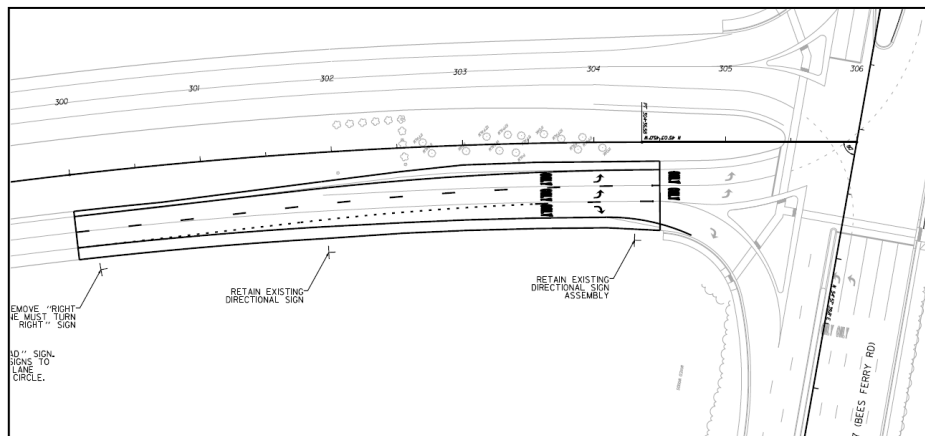
Traffic Alert: Nighttime Paving and Lane Closures for the Glenn McConnell Parkway Turn Lane Project at Bees Ferry Road

[Charleston County Government](#) announces that nighttime lane closures will occur on Glenn McConnell Parkway, beginning Thursday, October 19. The closures will occur on the northbound lanes as you approach Bees Ferry Road. Crews will be utilizing flagging operations to control traffic while resurfacing and re-striping the asphalt pavement between the West Ashley Circle and Bees Ferry Road. This paving operation is expected to last approximately one night. All work is weather permitting.

At no time will the entire roadway be blocked to traffic.

October 19

- Nighttime lane closures will occur on Glenn McConnell Parkway Thursday night between 7 p.m. and 6 a.m.
- Flagmen will be on site to control traffic.
- Drivers will have access to businesses and residential properties along Glenn McConnell Parkway at all times.
- At least one lane in the northbound direction will remain open to traffic under flagging operations. Southbound traffic is not affected by this work.
- Drivers traveling through the project's construction zone are asked to be aware of equipment and crews working in the area at all times.



The project will modify the current traffic lane assignments as you approach the Bees Ferry Road intersection while traveling northbound on Glenn McConnell Parkway. The two lanes approaching the intersection will transition to dual left turn lanes so that a lane change to turn left onto Bees Ferry is not necessary. If you wish to turn right onto Bees Ferry, you will approach in the right lane and change lanes to a dedicated right turn lane. The goal of the project is to improve traffic flow and safety.

This project was requested by the City of Charleston and is being funded by the Charleston County Transportation Sales Tax Allocation program. Plans for additional improvements along Glenn McConnell Parkway are beginning as part of a new project recently approved as part of the 2016 Transportation Sales Tax Referendum.

Visit the official website at <http://roads.charlestoncounty.org> for public meeting notices and up-to-date news and information about all Charleston County Transportation Sales Tax road projects. Anyone with questions about the project can call Charleston County's Transportation Development Department at (843) 202-6140.

For information on Charleston County Government news and services, the public can:

- Visit our website: www.charlestoncounty.org



- Prepared by the Charleston County Public Information Office -